

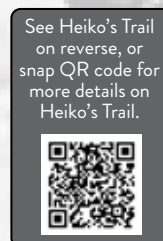
Fernie Mountain Bike and Hiking Trails 2024

(Non-Motorized)



In Case of Emergency Dial 911

In areas with no cell service carry a GPS enabled communication device.



See Heiko's Trail on reverse, or snap QR code for more details on Heiko's Trail.

GPS Trail Map - View Local Trails, Find & Track Your Position on Your Mobile
TRAILFORKS

There may be timber harvesting in August around Oliva Creek Road. For more details reach out to Fernie Trails Alliance.

Due to the heavy rains and flooding event in November 2021 causing road damage, River Road is closed to vehicle access. Trails above River Road, such as Roots, Hyper, Resurrection, can be accessed via the Montane Trails or biking/hiking up EY/TCT/River Road.

BRIDGE WASHED OUT IN NOVEMBER 2021 FLOODING EVENT. NO VEHICLE ACCESS PAST THIS POINT.

Ammonite Fossil
 New route and signage in development to one of North America's largest ammonite fossils in its original state. This is a very sensitive fossil, do not sit or stand in or immediate around it. The fossil is in a creek bed that dries up in summer. Tread carefully and lightly. For more information visit the Visitor Centre.

Construction in progress on Galloway Lands, trail closures may be in effect. Please acknowledge any closure signs.

Montane Trailhead
 Last summer the Montane trailhead moved to this new location off Montane Parkway with parking, trail info and an outhouse.

Coal Creek Road was damaged during the November 2021 rains and flooding event. There is no vehicle access to Matheson Falls, the Microwave Towers, Dirt Diggler or Al Matador.

See map insets on reverse side for Fernie Alpine Resort biking and hiking trails.

Timber Chair open Saturdays from July 13 - Aug 31, plus Aug 4 & Sept 1. Visit: SkiFernie.com for trail info.

Fernie Trails

Most of Fernie's trails are multi-use unless marked otherwise. All trails are non-motorized.

Montane & Castle	
Easy Beaver	Carpal Tunnel
Lower Uprooted	Hyper Extension
Uprooted	Resurrection
Roots	Hyper Ventilation
Montane	Castle Rocks
Marlu	South Castle
Tendonitis	Southern Comfort
Snoop Lion	Today's Special
Fernie Ridge	
Cemetery By-Pass	Upper Kid's Stuff
Rainer's Way (aka What's Up Doc)	Eric's Trail
Sidewinder	Roxy Roller
Kiddy Up	Space Unicorn
Queen V	Split Decision
Eco Terrorist	Coal Creek Heritage Trail
Broken Derailleur	Kush / Kushier / Kushiest / Kushin
R-Trail	Deadfall Downhill
Deadfall	Oh Dear
EVT / Coal Discovery Trail	Contra
Big Trouble Little Chain Ring	Porky Blue
FloReka	Fernie Ridge Hiking Trail
Trail Dogs	Big Money
Kid's Stuff	Bear Chutes
Mount Proctor	
Fairy Creek Falls (hiking only)	More Cowbell
Cow	YEddy
Far Side	Swine
	Mt Proctor (hiking only)
Mount Fernie Provincial Park	
Mushroom Head	Red Sonja
Dem Bones	Lactic Ridge
Stove Trail	Moc-Assassin
Lazy Lizard	Moccasin
Gorby Trail	S-Bomb
Megahurtz	Brokeback
Old Goat	Hedonism
Happy Gilmar	Eric's Trip / Mic Mac
Ben Emmet	Project 9
Sherwoody	Snake Bite
Purple Monkey Dishwasher	Verboten
Phat Bastard	Black Forest
Black Betty	New Goat
Morrissey Ridge	
Blue Matador	Three Kings
Al Matador	48 Hrs
Dirt Diggler	Dopamine
Difficulty (IMBA Ratings)	
Green: Easy. Most City of Fernie trails are easy and family-friendly. See www.fernies.ca for map	
Blue: Intermediate, mostly consistent with technical aspects. Low grade but may contain short steeps.	
Black: Advanced, quite variable and technical with longer steeps.	
Double Black: Extremely advanced, highly variable, very technical and steep.	

Trail Legend

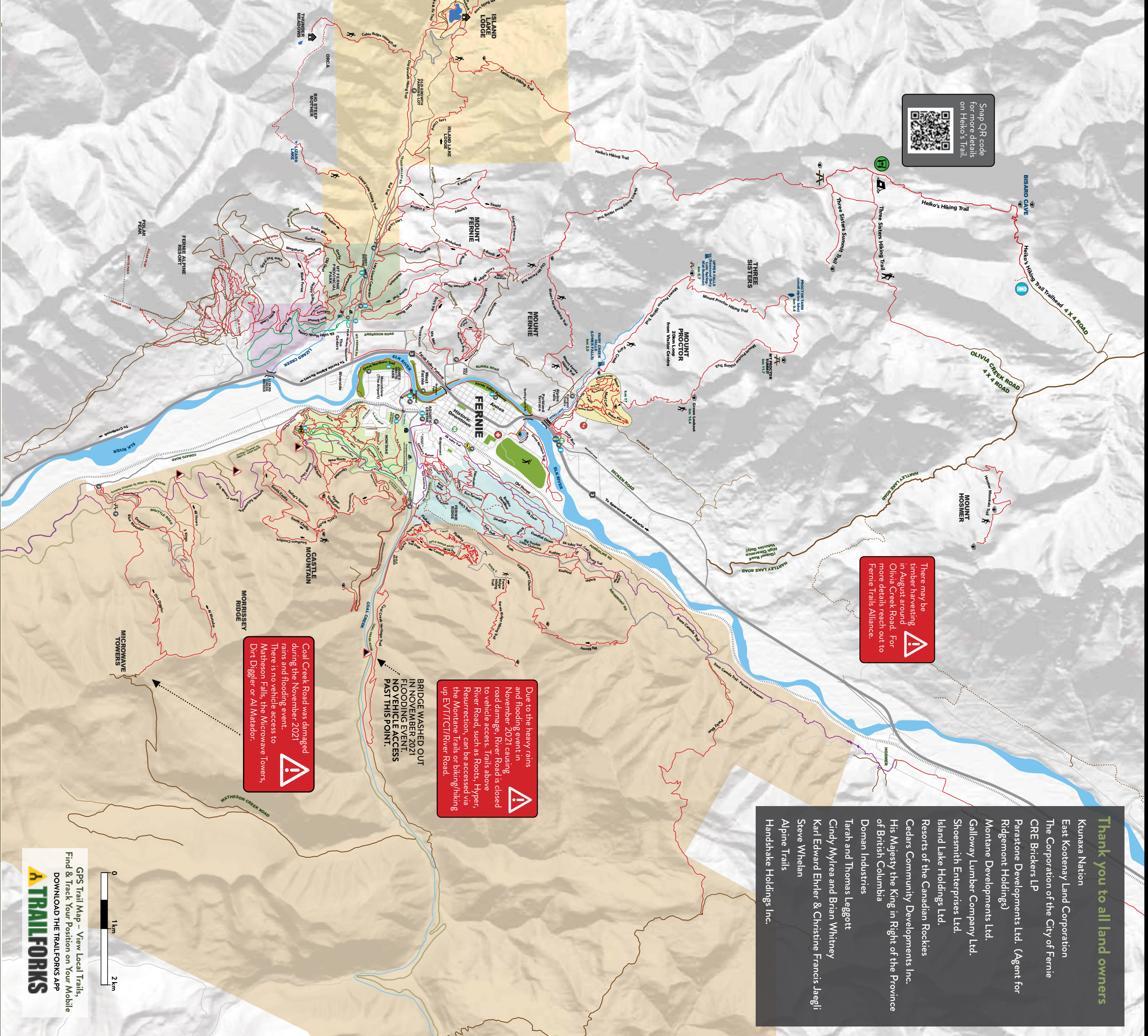
- Trail: Red line
- Route: Orange line
- Nordic Road: Green line
- Trans Canada Trail: Purple line
- Powerline/Back road: Brown line
- Route or Doubletrack: Dashed red line
- Wide or Paved Road: Grey line
- Road Closed to Motorized Vehicles: Yellow and black striped line
- BC Provincial Park: Green shaded area
- Island Lake Lodge: Yellow shaded area
- Galloway Land: Purple shaded area
- Fernie Ridge Land: Light blue shaded area
- Parastone Land: Light green shaded area
- Doman Land: Orange shaded area

Facilities Legend

- Porta Potty Outhouse: Blue toilet icon
- Public Indoor Washroom: Green person icon
- Off-Leash Dog Park: Yellow dog icon
- No Dogs Allowed: Red dog with slash icon
- Visitor Info Centre: Blue person with 'i' icon
- Parking: Blue 'P' icon
- Hospital: Red cross icon
- Hiking Trail: Hiker icon
- Camping: Tent icon
- Viewpoint / Bench / Picnic Table: Eye icon
- Road Washed Out: Red triangle with 'X' icon
- Waterfall: Blue waterfall icon
- Hut / Cabin: Brown house icon
- Barn: Brown barn icon
- Wilderness Pit Toilet: Green toilet icon
- Gate - Road may be closed to motorized traffic: Black gate icon

Scale: 0, 1km, 2km

Fernie Trails Overview

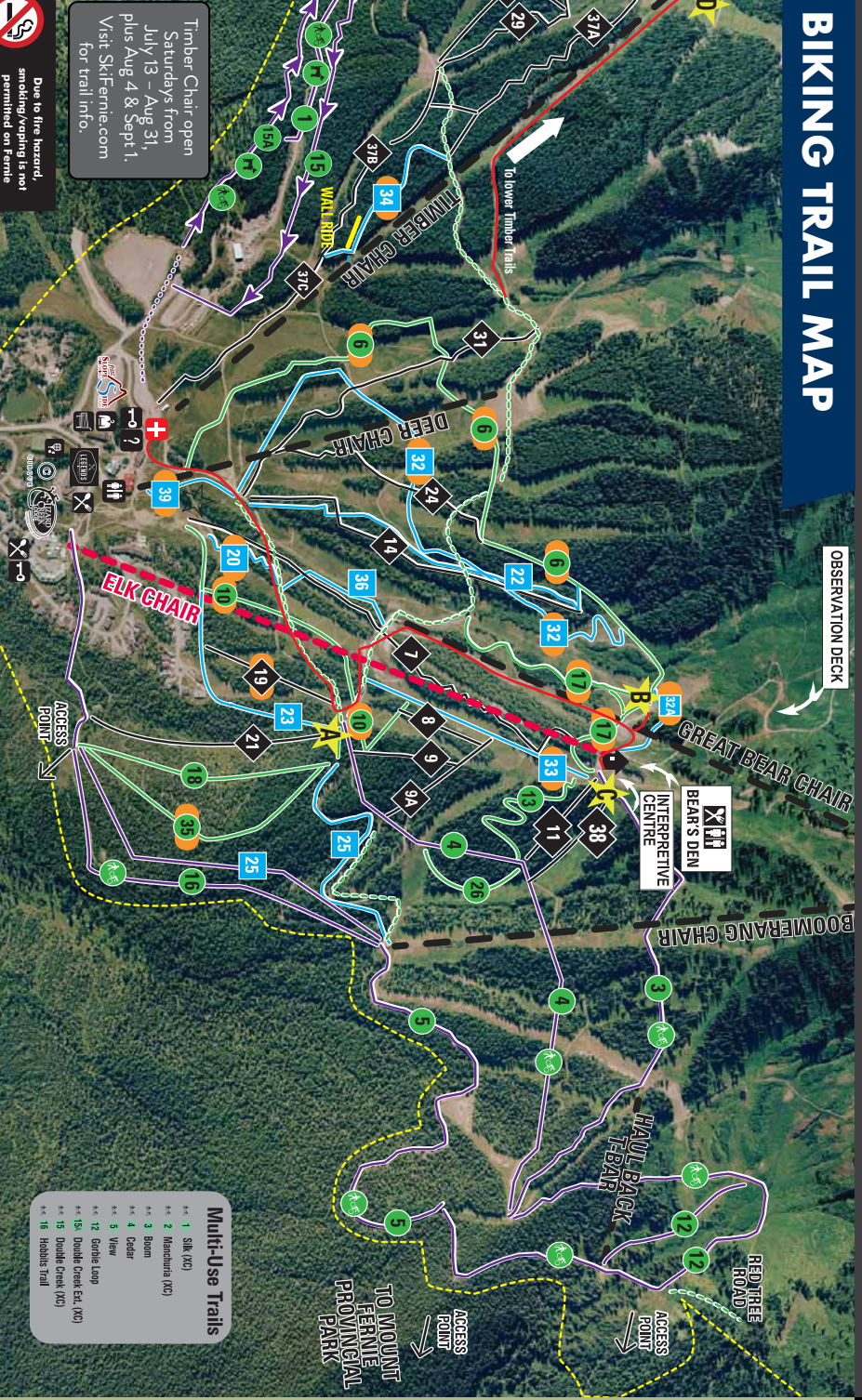


Fernie Alpine Resort

Fernie Alpine Resort offers lift access in the summer months (late June to early September) with 37 mountain biking trails and a variety of hiking trails. Trail maps are available at Guest Services and at skifernie.com.

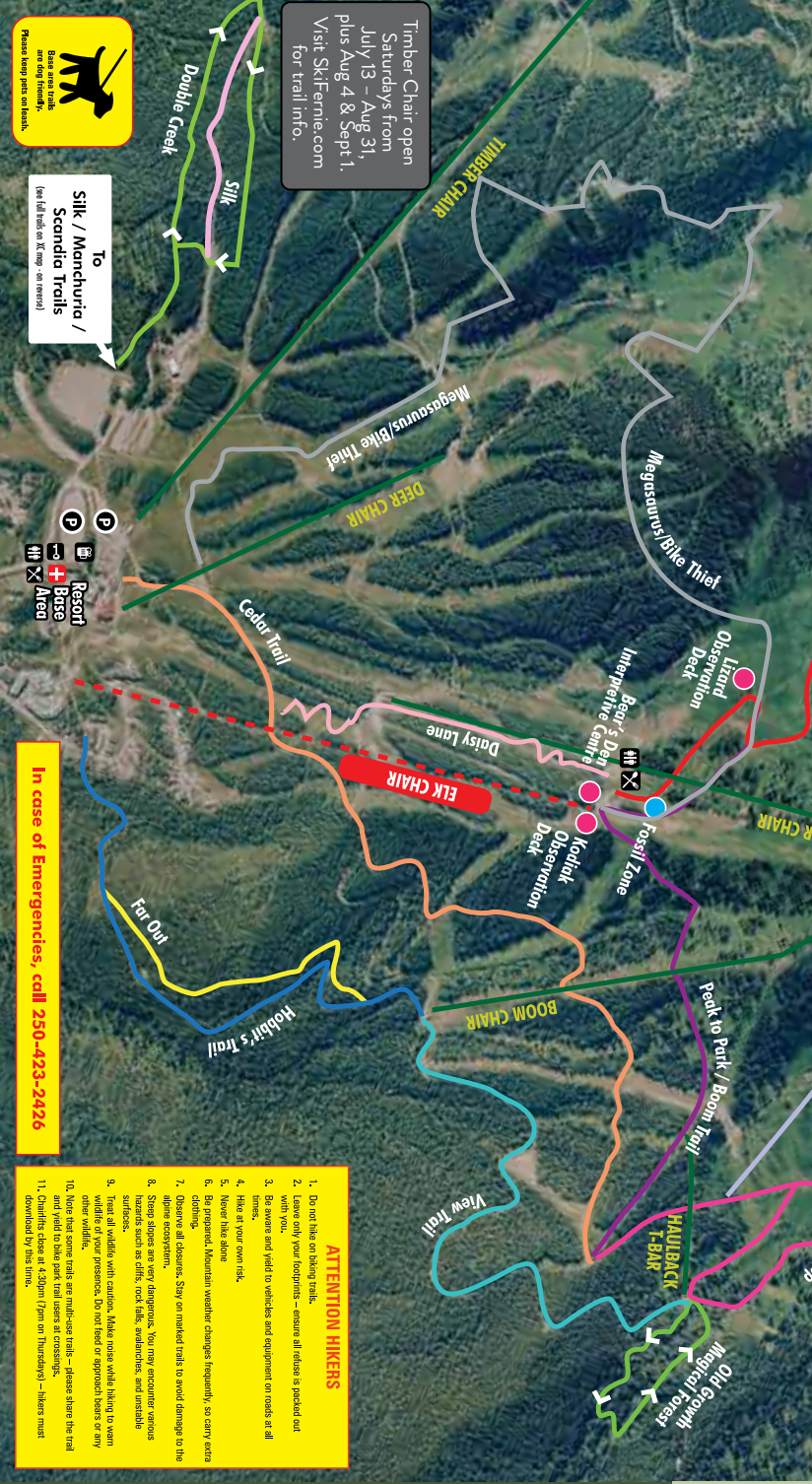
Recommended XC MTB Rides

Please consider biking to trailhead instead of driving as most trails are close to town.



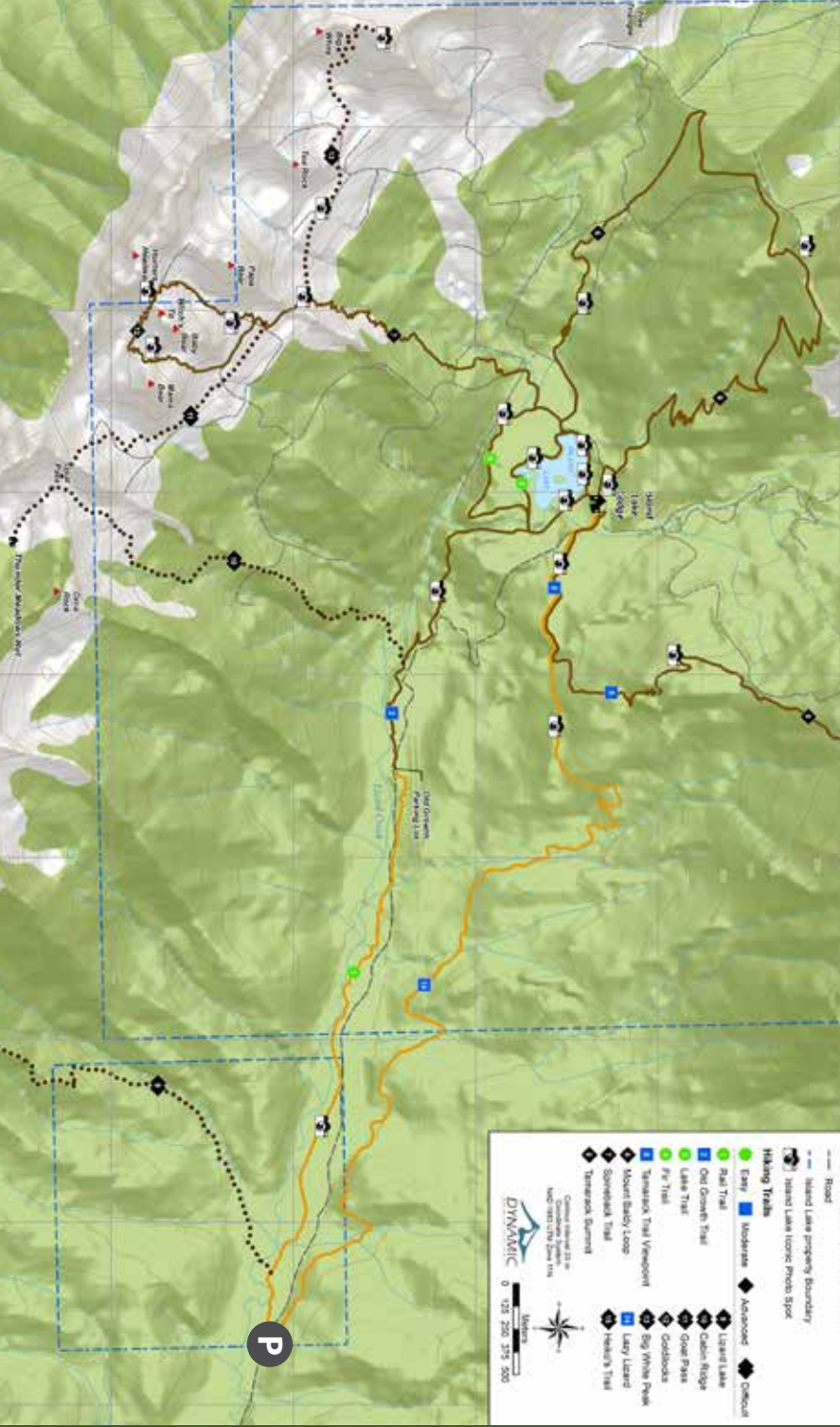
BIKING TRAIL MAP

Due to fire hazard, smoking is not permitted on the resort property.



Best Hikes in Fernie

- FAIRY CREEK FALLS**
 - Distance: 5km return (~1.2 hrs) Elevation Gain: 120m
 - Difficulty: Easy / Moderate
- MOUNT FERNIE TRAIL**
 - Distance: 8km return (~3.5 hrs) Elevation Gain: 910m
 - Difficulty: Moderate/Difficult
- MOUNT HOSMER TRAIL**
 - Distance: 8km return (~3.5 hrs) Elevation Gain: 910m
 - Difficulty: Moderate/Difficult
- MOUNT PROCTOR TRAIL**
 - Distance: 20km loop (~8-11 hrs) Elevation Gain: 1500m
 - Difficulty: Very Difficult
- HEIKO'S TRAIL**
 - Distance: 20km point-to-point (~8-11 hrs) Elevation Gain: 887m
 - Difficulty: Very Difficult
- ISLAND LAKE LODGE**
 - Distance: 8km return (~3.5 hrs) Elevation Gain: 910m
 - Difficulty: Moderate/Difficult



Using Fernie Trails

Local trail organizations work collaboratively with a multitude of stakeholders such as government, private landowners, tourism and support Fernie's trail network for both locals and visitors. Access to most trails in Fernie is free but it takes a lot to maintain and develop them. Many trails in Fernie are on private land with permission by the landowners. Please be respectful and appreciative of the landowners for allowing public access on their land. Only maintenance of the trail system is allowed by designated trail groups. No new trails can be constructed without written permission from the landowners. Please support local trails by donating or coming a member of the various groups. See QR codes and websites on this map for further details.

Leave No Trace

We live within the wild, and it is essential that all who enjoy this environment, keep it pristine. We support Leave No Trace, Wildside BC and AdventureSmart for a great experience on the trails.

- Plan ahead & be prepared.
- Stick to designated trails only.
- Dispose of waste properly. Pack in, Pack out.
- Leave what you find.
- Respect wildlife & know what to do when you encounter it.
- Be considerate of others.

Are e-bikes allowed on trails?

Class 1 e-bikes are allowed on trails. A Class 1 e-bike means a bicycle equipped with a motor that provides assistance only when the rider is pedaling (fossil assisted) and that ceases to provide assistance when the bicycle reaches 32 kilometers per hour and has a maximum continuous wattage output of 500 watts.

Limited Mobility?

Cycling Without Age is a non-profit international volunteer organization that takes elderly and less abled citizens out for free bike rides in specialized bikes called trikes. Book a ride at 250-278-9773. Rides are free and about an hour long.

Support Local & Experience Fernie

Fernie is a community full of history, arts, culture, amazing outdoors and great people. Be in the know on everything Fernie by visiting TourismFernie.com. Support local businesses this season and be sure to purchase local trail passes or donate to the various trail organizations.

Supporting Fernie's Summer Trail System

Trails in and around Fernie are as prevalent and deeply rooted as the area's history. Locals and visitors contribute to their passion for enjoying the outdoors thanks to a diversity of old and new trails. With each year, more people are discovering the beauty of the outdoors and the importance of maintaining our trails. We are currently looking for volunteers to help with trail maintenance and trail building. Please contact us at 250-278-9773 for more information.

Local Trail Events in 2024

- Little Custer DH Race - July 6-7
- Monthly May-Sept
- Thruway Fun Run Club - July 5-9
- Monthly June-Sept
- Fernie Grand - July 12-14
- Women's MTB Social Rides - July 27
- Women's MTB Social Rides - August 3
- Scott's Thursday Night Run Series - August 28
- Fernie Half Marathon - Slim & Tom - October 6
- WAA BAA Dirt Jump Jam - June 29

COAL CREEK HERITAGE SOCIETY (CCHS)

CCHS holds agreements with the land owners to build, maintain and manage the trail networks on Montane and Fernie Ridge for summer and winter public use. Please donate to help support these trails by using this QR code.

Fernie Trails Alliance (FTA)

FTA builds, maintains and enhances trails through land use agreements with the Crown, BC Parks, Camuel, City of Fernie, Island Lake Lodge and multiple other private land owners to ensure public access year-round. Use this QR code to purchase your Fernie Trails Pass and support the trail network.

Local Trail Events in 2024

- Little Custer DH Race - July 6-7
- Monthly May-Sept
- Thruway Fun Run Club - July 5-9
- Monthly June-Sept
- Fernie Grand - July 12-14
- Women's MTB Social Rides - July 27
- Women's MTB Social Rides - August 3
- Scott's Thursday Night Run Series - August 28
- Fernie Half Marathon - Slim & Tom - October 6
- WAA BAA Dirt Jump Jam - June 29